

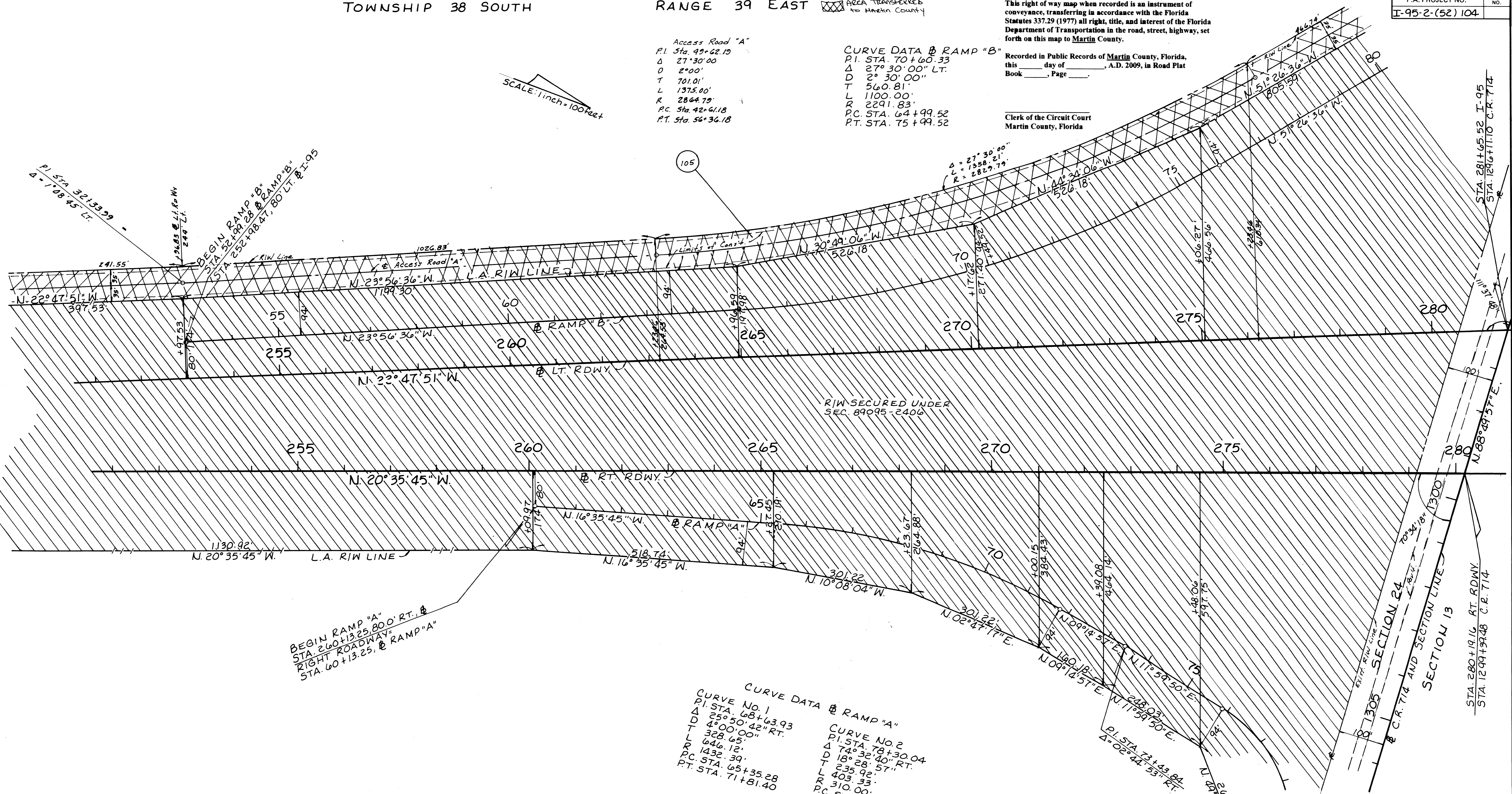
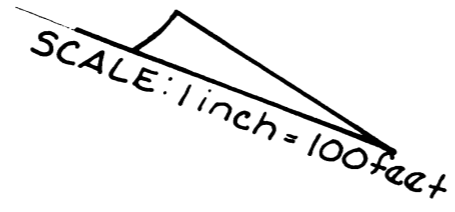
This right of way map when recorded is an instrument of conveyance, transferring in accordance with the Florida Statutes 337.29 (1977) all right, title, and interest of the Florida Department of Transportation in the road, street, highway, set forth on this map to Martin County.

Recorded in Public Records of Martin County, Florida, this \_\_\_\_\_ day of \_\_\_\_\_, A.D. 2009, in Road Plat Book \_\_\_\_\_, Page \_\_\_\_\_.

Clerk of the Circuit Court Martin County, Florida

Access Road "A"  
P.I. Sta. 49+62.19  
Δ 27°30'00"  
D 2°00'  
T 701.01'  
L 1375.00'  
R 2864.79'  
P.C. Sta. 42+61.18  
P.T. Sta. 56+36.18

CURVE DATA B RAMP "B"  
P.I. STA. 70+60.33  
Δ 27°30'00" LT.  
D 2°30'00"  
T 560.81'  
L 1100.00'  
R 2291.83'  
P.C. STA. 64+99.52  
P.T. STA. 75+99.52



BEGIN RAMP "A"  
STA. 260+13.25 80' RT. @  
RIGHT ROADWAY=  
STA. 60+13.25 @ RAMP "A"

CURVE NO. 1  
P.I. STA. 68+63.93  
Δ 25°50'42" RT.  
D 4°00'00"  
T 328.65'  
L 646.12'  
R 1432.39'  
P.C. STA. 65+35.28  
P.T. STA. 71+81.40

CURVE NO. 2  
P.I. STA. 78+30.04  
Δ 74°32'40" RT.  
D 18°28'57"  
T 235.92'  
L 403.33'  
R 310.00'  
P.C. STA. 75+94.12  
P.T. STA. 79+97.45

FLORIDA DEPARTMENT OF TRANSPORTATION  
RIGHT OF WAY ENGINEERING SECTION  
**RIGHT OF WAY MAP**  
STATE ROAD NO. (I-95)9 MARTIN COUNTY  
DRAWN BY R.B.S. 10-6-80 APPROVED BY E.C. Lord  
TRACED BY J.C.B. 7-10-81  
CHECKED BY J.C.B. 7-10-81  
MAPS PREPARED BY 2nd DISTRICT OFFICE  
W.P.I. NO. 446415  
SCALE 1 inch = 100 feet  
SECTION 89095-2414 SHEET 14